



COVER/STORY

AUTUMN WINTER '23

*EVERY ROAD IS  
YOUR RUNWAY*



GET BACK TO WHERE  
YOU ONCE BELONGED

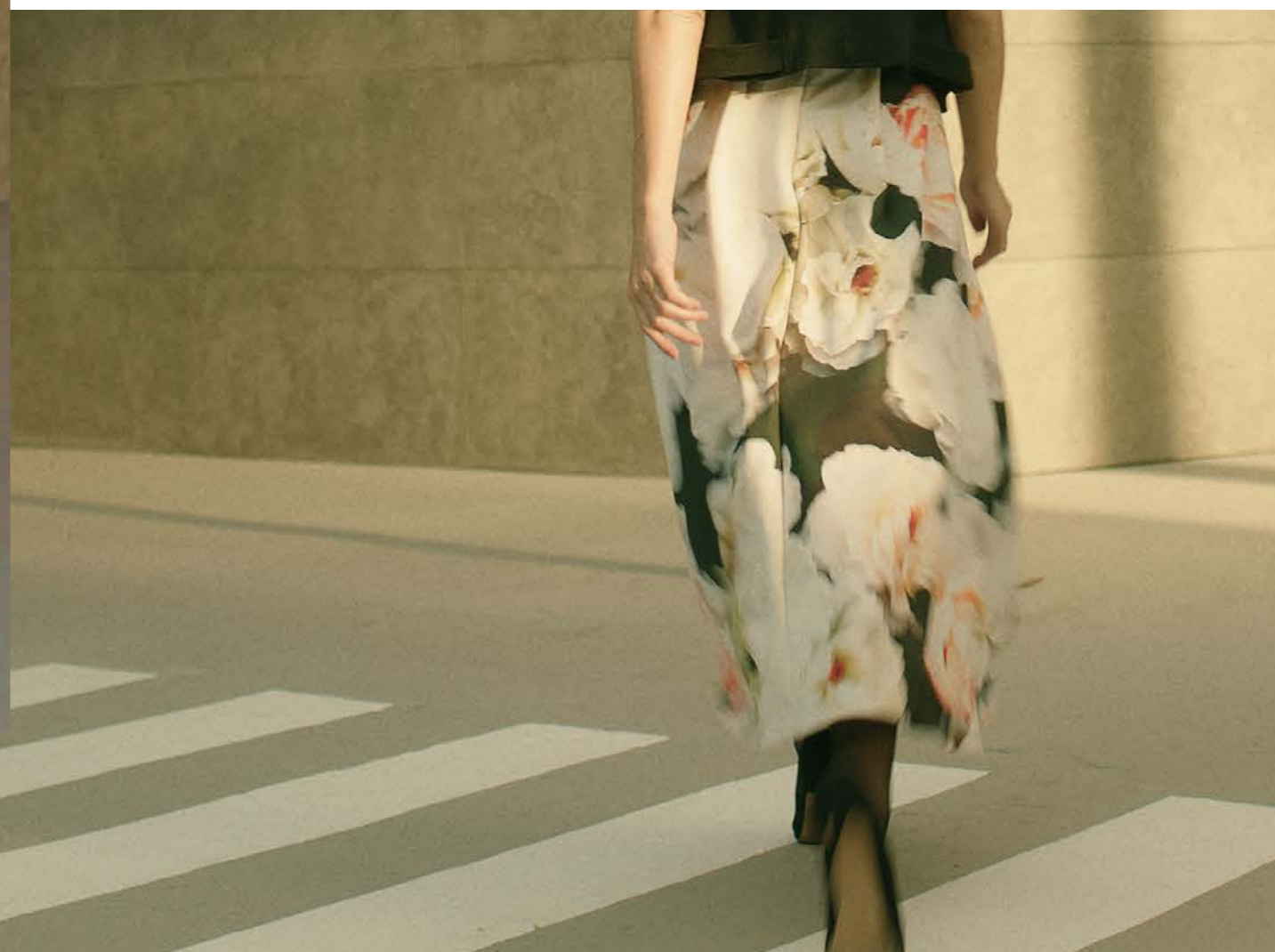
Walk a timeless walk with our London girl  
this season. The grandeur of prints, classical  
cuts and Boho vibes. This season be sure to  
be stylish, all day.


Make a statement in this bold  
black & white floral scuba dress,  
featuring a pleated volume skirt  
for heightened drama.

## *THE LONG AND WINDING ROAD*



*B&W PROM DRESS*





A touch of retro Boho, with this oversized geo knit jacquard co-ord, featuring a cropped funnel-neck top and wide-leg pants. Wear as solo or together, for the full effect.

Super-soft and stylish, this brown faux fur cropped jacket will keep you warm throughout winter.

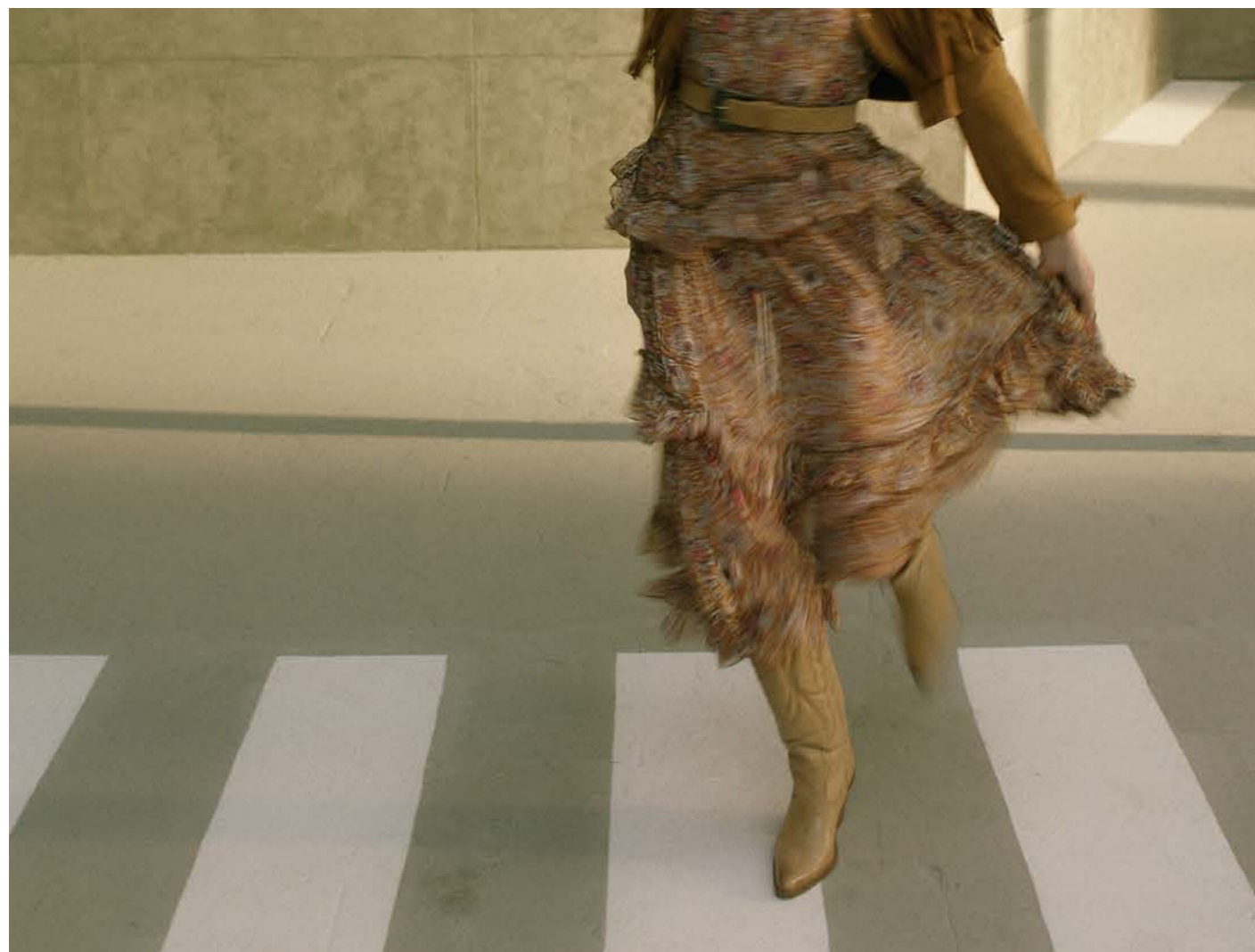
*JACQUARD CO-ORD*



## *TWIST AND SHOUT*

Boho paisley maxi dress in viscose chiffon, with statement ruffles and hanky hem styling. Pair it with cowboy boots for a laid back boho look.

Our classic cropped mock-suede jacket has been updated with an oversized fringe detailing.



*BOHO PAISLEY DRESS*

EVERY ROAD IS  
YOUR RUNWAY

AUTUMN WINTER '23

EVERY ROAD IS  
YOUR RUNWAY

AUTUMN WINTER '23

EVERY ROAD IS  
YOUR RUNWAY



AUTUMN WINTER '23

AUTUMN WINTER '23

EVERY ROAD IS  
YOUR RUNWAY

AUTUMN WINTER '23

AUTUMN WINTER '23

EVERY ROAD IS  
YOUR RUNWAY

AUTUMN WINTER '23

EVERY ROAD IS  
YOUR RUNWAY

AUTUMN WINTER '23

EVERY ROAD IS  
YOUR RUNWAY

HERE THERE  
AND EVERYWHERE

EVERY ROAD IS  
YOUR RUNWAY

AUTUMN WINTER '23

EVERY ROAD IS  
YOUR RUNWAY

AUTUMN WINTER '23

EVERY ROAD IS  
YOUR RUNWAY

AUTUMN WINTER '23

EVERY ROAD IS  
YOUR RUNWAY

# WALK THE WALK



*BLOUSE AND PU SKIRT*



Voluminous sleeves add drama to this delicate floral burnout organza blouse.

A classic A-line silhouette given a modern makeover in PU leather. Topstitched belt and metal buttons add a touch of cool.



Both glamorous and flattering, this stretch sequin midi-length pencil skirt will add a touch of sparkle to your look.

A plush chenille jumper in lilac, with a relaxed, minimalist silhouette and oversized stitch detailing.



*SEQUIN PENCIL SKIRT*

# COME TOGETHER

This pink georgette asymmetric ruffle slip dress is perfect for cocktail party or date night. Statement corsage detail adds fashion forward touch.

The key item of the season, a leather trench, contrast the strong outerwear look with feminine dresses and ruffles.

